

August 2017



MAITLAND GROSSMANN HIGH SCHOOL NEWSLETTER

"Providing Quality Education in a Caring Learning Community"

P.O. Box 562
EAST MAITLAND NSW 2323
Phone: 4934 2066
Fax: 4934 5086
Email: maitgross-h.school@det.nsw.edu.au

PRINCIPAL

Our students and staff are making their final preparation for our visit to Japan in the October holiday break. Mr Brown, Mrs Montgomery and Mr McAndrew will accompany the students on this very exciting excursion to meet up with our sister school students from Sukagawa Toyo High School.

Year 12 are about to commence their Trial Higher School Certificate and will be spending the remainder of the term consolidating their studies, to optimise their results. This is a very important time for students to work closely with their teachers to ensure the best possible outcomes. Parents seeking assistance and support please do not hesitate to contact the school.

Mr James Heaney has retired from deputy principalship after thirteen years of strong commitment to the students of Maitland Grossmann High. He will be remembered for his overwhelming drive to see all students were able to do their very best, and enjoy attending Maitland Grossmann High. I know you will join with me in wishing him a very long and fulfilling retirement.

Students and parents are reminded that school sport is a mandatory requirement for all students, in NSW public schools. In line with the national requirement to increase student fitness and reduce obesity, we are looking to ensure all students have access to quality physical activities and education. Please ensure that your child has regular attendance at sport. **Please note that students are no longer able to sell chocolates, sweets or doughnuts through the school as fundraisers.**

Additionally, our School Canteen continues to provide a wide variety of very healthy hot and cold foods daily, for both students and staff. Our canteen runs on the goodwill of volunteers. If you have any time to spare please give a thought to helping out, if only once a month. Please ring Lisa on 49335792.

The school has attracted \$100,000 sponsorship from Samsung to be able to provide quality technology to students in all aspects of STEM (Science Technology Engineering and Mathematics) over the next three years. We are working with our partner primary schools to ensure student learning is driven across the curriculum by emerging technologies and the need for digital and technological skills for all students into the future.

I remind all graduating students and those moving from Maitland Grossmann at the end of Years 11 and 12 that we have celebratory functions. All functions which are organised through the school require the highest standards and no consumption of alcohol. There is NO Year 10 Formal as all students are required to attend school until they are 17 and to fulfil the requirements of a ROSA (Record of Secondary Achievement) which they receive when they leave school, if they do not proceed to the Higher School Certificate.

Dr Di Soltau

Principal

August 2017

CURRENT SPONSORS

WESTPAC BANK (Green Hills)

Take out a loan and mention Maitland Grossmann High School. The school will receive a monetary contribution from the Westpac Bank.

ATHLETE'S FOOT (Green Hills & Charlestown) Become a Club Fit Member and the school will receive a monetary contribution from Athlete's Foot.



PHOTOS

Occasionally photographs are taken of individual students or classes at school. Please notify the school in writing if you do not want your student photographed.

REMINDER TO PARENTS

When parking/stopping outside the school please be mindful of the residents living in the area. Could you please ensure that there is adequate room for residents to enter and exit their premises at all times during the day.

MGHS UNIFORM SHOP OPENING TIMES 2017

TUESDAY: 8.00am-12.00pm

THURSDAY: 1.00pm-5.00pm

CASH, EFTPOS, MASTERCARD and VISA ACCEPTED AT UNIFORM SHOP

ALSO AVAILABLE ONLINE SHOPPING

(THROUGH THE SCHOOL WEB SITE)

NEWSLETTER DATES FOR 2017

TERM 3

20th September

TERM 4

8th November & 18th December

ATTENTION PARENTS/ CAREGIVERS

Maitland Grossmann High School

Has a

Web Page

www.mghs.com.au

The newsletter is available on the Website for all to access

If you require a printed copy of the newsletter posted out to your family, please fill in the form below and return to school A.S.A.P

Name..... Student.....

Postal Address.....

Phone.....

FAREWELL FROM MRS OSBORNE

This is a very different article to be writing considering the number of articles that I have written over the years for our school newsletters and magazines. This will be my last article as a staff member of Maitland Grossmann High School.

In early 2016 I made the decision to take what I called "Mrs Osborne's Gap Year". That "Gap" year gave me the time to slow down!! It has also extended into a second year.

As many reading this article will know, my involvement with our school goes back a very long way and has been varied. It includes being a student of Maitland Girls' High School at our current site, a casual teacher on our Maths staff, a parent, a P&C member and a representative on the School Council. My retirement from teaching comes as the Careers Adviser of my most beloved school.

I have worked with the most amazing teachers and staff and have been privileged to work with four supportive and pro-active Principals. I remember our school as an all-girls school, and leave it proudly as a comprehensive, co-educational, integrated and diverse school with a strong reputation in our community for providing an excellent learning environment and opportunities for all students.

As an "Old Girl" of Maitland Girls' High School, I am proud of our history and traditions. Our school was founded in 1884 and the motto "Labor Omnia Vincit" (Work Conquers All), is current even in today's fast paced world. I have been a proud Prefect of our school as a student and a proud Prefect Adviser, as a staff member. School Captains, Vice Captains, Prefects, Senior Prefects and Student Representative Council members are aware of their responsibilities as school leaders and respect the traditions of "those who went before". Anyone attending a school assembly can attest to the increased volume of our school song when it's time for the chorus. An "old girl" or ex-student or staff member, always knows these words and is just one more favourite memory that I have of our school. Acknowledging our past should not be forgotten.

Writing this article has made me reflect on my contribution to our school and the many programs that I have been involved with. My community programs such as Adopt a Resident, Café Cumberland, Cumberland Cookies, Friday's Breakfast and Step Up have provided such fond memories for all involved. "Seize the Day" for Year 12 students and themed Careers evenings were annual events and integral to my careers program.

My appointment as permanent Careers Adviser began in 2003, although I had been in the role part-time for many years previously. Without a doubt, the years as Careers Adviser have been my most rewarding of my long teaching career. I have loved my time as the Careers Adviser of Maitland Grossmann High School and the relationship that I had and still have with our students. I love the times that I run into our students and I recognise the young person that they were, and acknowledge the adult that they have become. Our students have done amazing things-many at the forefront of their fields.

It would be remiss of me not to acknowledge the people that I work with. The talented and caring staff who I call friends has meant work has never been a chore. Maitland Grossmann High School is where I have felt valued and hope have created positive memories, opportunities and skills to the many students that I have taught.

I am looking forward to this next chapter of my life and thank the staff, students and parents for making my time at Maitland Grossmann High School so rewarding and for creating such wonderful memories for me.

Lee Osborne

Retired Careers Adviser

August 2017

Student Showcase @Maitland Regional Art Gallery

SHOWCASE 4 is the fourth Showcase exhibition at Maitland Regional Art Gallery (MRAG) since 2013, which features recent artworks made by Year 7-12 students from high schools in the Maitland-Lower Hunter area.

Each school was requested to submit a selection of works before the gallery curated their own selection of artworks representing the diverse practices of student works at the highest standard.

Congratulations to Kayla Van Gool Year 8, Alexandra Fletcher Year 12 and both Year 12 Visual Arts classes, for their selection in the exhibition.

MRAG is in High Street Maitland and the Student Showcase runs 03 Jun 17 > 10 Sep 17 along with other touring exhibitions, it is certainly worth a visit.



Kayla



Alexandra

Year 12 Group work



SPORTS REPORT

There has been a lot of action on the fields and courts at Grossmann to start Term 3. I am pleased to announce that we have 335 students and 34 staff participating in the Premier's Sporting Challenge. For most, student data will be recorded in school sport time, however, for all – it is a timely reminder for everyone to get out and enjoy lots of physical activity. To coincide with the PSC, Year 7 school sport has been participating in a Group Fitness class run by an ex-student, as well as, a new game in their weekly rotations, called Korfbal.

Week 2 of this term saw MGHS send 34 students to the Hunter Region athletics carnival. We had a number of outstanding results across the 2 day event. Congratulations to Ashley Sorensen, Sophie Sorensen, Justin Rhind and Flinders Cobley who have qualified for the NSW CHS athletics carnival to be held at Homebush later in the term.

Flinders Cobley also proudly represented MGHS at the NSW CHS cross country championships – the Year 7 student finished in the top 30. A great effort!

Our CHS Knockout teams are continuing to achieve very pleasing results. The open girls' baseball team will play their NSW CHS quarterfinal in the coming weeks, our U15s boys' and girls' basketball teams are assembling, ready for action, and our Touch Football program, being led by Mr Focic continues to build momentum. As mentioned in previous newsletters, our rugby league program has taken off and is thriving, thanks to Mr Bayada. Some excellent results from our U14s and U15s and we look forward to watching them grow as a team as they move into their senior years.

Don't forget, please make payment to the front office for any outstanding bus fees – that includes Terms 1 and 2. Term 4 sport selections will be coming up in Week 8, so please ensure all accounts are finalised. Year 7 will also be able to select off-site sports for Term 4.

Mr P Anderson

Sports Organiser

SCHOOL CLOTHING**SALE 20 %****MGHS at the UNIFORM SHOP****Instore & online****Uniform Shop opening times****Tues 29 August between 8am-12pm****Thurs 31 August between 1-5pm****Tues 5 Sept between 8am-12pm****Thurs 7 Sept between 1-5pm****Exchange of sizing need to occur during this sales time
of two weeks****No discount given on school jumpers and technology
packs****Sales are on stocked items only****No refunds are given on sale items****Thanks for your continued support throughout the year**



School newsletter copy

Year 9 NAPLAN results and the HSC minimum standard

Message from NESA

HSC minimum standard required to receive the HSC from 2020

Literacy and numeracy skills are the foundation for success in life after school. This is why eligibility for the HSC is changing. From 2020, students will need to show they have the basic literacy and numeracy skills needed to complete everyday tasks.

Your child will have a number of opportunities from Year 9 to Year 12, and even after the HSC to show they meet the HSC minimum standard

Some students will meet the requirement early through their Year 9 NAPLAN results in reading, writing and numeracy. However, most students will show they meet the standard by passing short, online reading, writing and numeracy tests in Years 10, 11 or 12.

The writing test will require students to respond to a question about a prompt or stimulus.

Year 9 NAPLAN reports available in mid-August

Your child's Year 9 NAPLAN report will indicate which online HSC minimum standard test/s (if any) they will need to pass to be eligible for the HSC certificate. Remember your child has three more years of learning before the HSC and can take the HSC minimum standard online tests in Years 10, 11 or 12. Year 9 NAPLAN is a good chance to check they are on track or get support to meet the minimum standard by Year 12.

If your child has achieved a Band 8 or above in reading, writing or numeracy, the NAPLAN report will indicate that they have "Met the HSC minimum standard early" in the respective area/s.

Your child can sit the online HSC minimum standard tests when they are ready

There are three separate 45 minute online tests: reading, writing and numeracy. Students don't have to pass all three tests at once and can attempt each test up to twice a year. The reading and numeracy tests each contain a maximum of 45 multiple choice questions. You can try some sample reading and numeracy questions at <https://hsliteracynumeracy.nesa.nsw.edu.au/>

For more information visit www.educationstandards.nsw.edu.au

YEAR 7 READING PROGRAM

Year 7 students are fortunate that Maitland Grossmann High School runs a Reading Program three mornings each week. This is a compulsory component of the curriculum and an invaluable literacy strategy.

It is essential all year 7 students attend reading on Monday, Wednesday and Friday mornings, commencing at 8.50 am.

Thank you for your support in ensuring your child arrives at school in time for reading.

Wendy Stephan

TELL THEM FROM ME SURVEY

This term, our school, like many other public schools in the state, will participate in a Department of Education initiative: the *Tell Them From Me* student feedback survey. The survey measures factors that are known to affect academic achievement and other student outcomes. The focus of the NSW-wide survey is on student wellbeing, engagement and effective teaching practices.

You may remember that our students also participated in a *Tell Them From Me* student survey in Term 1 this year. Asking students to complete the survey twice in one year allows us to identify trends in student responses as well as track engagement and motivation across the school year.

The survey is a great opportunity for our students to provide us with valuable and quick feedback on what they think about school life, how engaged they are with school and the different ways that teachers interact with them. Schools in Australia and around the world have used the *Tell Them From Me* survey to help improve how they do things at school.

More information about the survey is available at: <http://surveys.cese.nsw.gov.au>

I want to assure you that the survey is confidential. The survey is conducted online and will typically take less than 30 minutes to complete. It will be administered during school hours between 21st August and 13th October. Participating in the survey is entirely voluntary.

A consent form and FAQs for parents/carers about the survey is being sent home with students. If you **do not** want your child or children to participate, please return the form to school by **18th August**. Copies of the form and FAQs are available from: <http://surveys.cese.nsw.gov.au/information-for-parents>.

Suzanne Ross

Relieving Deputy Principal



Education
Centre for Education
Statistics & Evaluation

***Tell Them From Me* parent survey Frequently Asked Questions (parents and carers)**

Centre for Education Statistics and Evaluation

1. What is the Partners in Learning parent survey?

The Partners in Learning parent survey is part of the *Tell Them From Me* suite of surveys on student engagement. The parent survey helps to clarify and strengthen the important relationship between parent and school.

The survey is designed to measure, assess and report insights from the parent point of view at the school and system levels. The focus of this NSW survey is on student wellbeing, engagement and effective teaching practices.

2. What kind of questions will the survey ask?

The survey questions aim at understanding parents' perspectives on their child's experience at school, including teaching, communication and the school's support of learning and behaviour. The survey also aims to understand parents' perspectives on activities and practices at home related to their child's learning.

The survey will ask parents questions about:

Parents feel welcome	Parents are informed	Parents support learning at home	Parents participation at school
School supports positive behaviour	Safety	Inclusion	School supports learning

3. How have schools been selected to take part?

The survey is open to all NSW government schools at no cost to them. Your school has decided to participate.

4. How will taking part in this survey benefit my child's school?

The parent survey provides school principals and school leaders with parents' perspectives on their school as well as learning at home. Communication between parents and staff, activities and practices at home, and parent views on the school's support of learning and behaviour help build an accurate and timely picture that schools can use for practical improvements.

Data collected from the survey responses are quickly compiled into reports for school leaders. Principals can then use this information to help them identify emerging issues and plan for school improvement.

5. How does the parent survey relate to the student survey?

The parent survey is complementary to the *Tell Them From Me* student survey that your child may have been asked to complete. These surveys are offered (along with a teacher survey) to ensure schools can capture the views of students, teachers and parents.

For more detail on each of the surveys, see the survey website: <http://surveys.cese.nsw.gov.au/>

6. What do I need to do to participate in the survey?

The survey typically takes 15 minutes and is conducted entirely online through a secure website operated by the survey developers, *The Learning Bar*. You will be provided with a link to complete the survey at home or your school may make computers available so that you can complete the survey during school hours.

7. Do I need to participate?

No, participation in the survey is optional. Whilst your responses are very much appreciated, if during the survey, you feel uncomfortable, you can stop the survey at any time. The majority of questions in the survey can be skipped.

8. Will the school be able to identify me or my child from my responses?

Staff in schools will not be able to identify individual parents or students from parent responses. To protect parent anonymity, schools will be provided with a single username and password for the school prior to the start of the survey period. This username and password will then be distributed to parents. Data suppression rules are applied to the school reporting tools where there are fewer than five responses.

9. What sort of analysis will be done of the survey data?

Once the surveys are completed, reports are prepared and in most cases are available to schools within three business days. School leaders can use the data to better understand the experiences and views of parents at their school.

CESE will undertake state-wide analysis of the survey data in conjunction with existing student data held by the department, including performance data. The results will help all schools better understand the relationship between parents and students' engagement, students' wellbeing, effective teaching and student learning. Results from CESE's analysis of this data will also help teachers and principals discuss what works to improve student outcomes. This supports the department's continuing focus on quality teaching and leadership. The data will be retained for future analysis to help us better understand the nature of student engagement and wellbeing over time.

10. When will the Partners in Learning survey happen?

The surveys will be conducted in all participating schools between Monday 21st August (Week 6, Term 3) and Friday 13th October 2016 (Week 1, Term 4).

What is CESE?

The Centre for Education Statistics and Evaluation (CESE) is part of the Department of Education.

CESE has been established to improve the effectiveness, efficiency and accountability of education in New South Wales.

CESE will identify and share what works, creating new opportunities to improve teaching and learning across all of education.

More information about CESE is available at: www.cese.nsw.gov.au

What is *The Learning Bar*?

The Learning Bar specialises in research-based design and facilitation of student assessments and survey solutions for both primary and secondary students. The in-house research team led by the President, Dr J Douglas Willms, undertakes extensive projects used in the school system to effect national policy. It is against this research that the survey, *Tell Them From Me*, has become the largest national school survey in Canada, used in nine of the ten provinces. More than 4,500 schools and 3.5 million Canadian students have participated in the survey over the last twelve years.

Dr Willms holds the Canada Research Chair in Literacy and Human Development and played a lead role in the development of questions on student engagement for the OECD's Programme for International Student Assessment (PISA).

More information about *The Learning Bar* is available at: www.thelearningbar.com

If you have any questions about the parent survey, please contact CESE via email: TTFM@det.nsw.edu.au or by telephone: 9561 8056 / 9561 8370.

August 2017



King St Community Preschool East Maitland 50 Year Celebration.
(Formerly Catherine Preschool).

As part of our 50 Year Celebration we will be installing an engraved brick wall. We are asking all of our Previous and Existing families if they would like to add their family to our memorial wall. The cost of the brick facing will be \$30 each and it can contain up to 48 letters.

The wall will be unveiled on our Family Fun Day which will be held in October 2017. All welcome to come along.

If you would like to buy a brick to commemorate this historical event and have your families name added to the wall. (Please call the Preschool on 02 4933 4045 or email admin@kingstpreschool.com.au for an order form).

We are needing all names and payments by no later than Friday 31st August 2017.

A6701 MUNDY K J
2 ACS MALAYA
1957 - 1960



NAME BRICK FACING TEMPLATE

King St Community Preschool East Maitland Inc.

We are developing a Celebration Wall for King St Community Preschools
50 Year Celebration.

OFFER: \$30.00

Your donation of \$30 entitles you to have your name engraved into a brick facing as a lasting record of your valued support. The facing will be permanently installed on our front wall.

proudly showing your donation. Size: 230 x 76 x 14mm

JOHN, LISA & MARY
CUNNINGHAM

ENGRAVING DETAILS

Please print clearly in block letters. Each box represents a character (letter, number, punctuation mark or space). Max 16 characters per line, three lines per brick facing. (No hand drawings).

NAME BRICK FACING	LINE 1	<input type="text"/>	<input type="text"/>	<input type="text"/>	<input type="text"/>	<input type="text"/>	<input type="text"/>	<input type="text"/>	<input type="text"/>	<input type="text"/>	<input type="text"/>	<input type="text"/>	<input type="text"/>	<input type="text"/>	<input type="text"/>	<input type="text"/>
	LINE 2	<input type="text"/>	<input type="text"/>	<input type="text"/>	<input type="text"/>	<input type="text"/>	<input type="text"/>	<input type="text"/>	<input type="text"/>	<input type="text"/>	<input type="text"/>	<input type="text"/>	<input type="text"/>	<input type="text"/>	<input type="text"/>	<input type="text"/>
	LINE 3	<input type="text"/>	<input type="text"/>	<input type="text"/>	<input type="text"/>	<input type="text"/>	<input type="text"/>	<input type="text"/>	<input type="text"/>	<input type="text"/>	<input type="text"/>	<input type="text"/>	<input type="text"/>	<input type="text"/>	<input type="text"/>	<input type="text"/>

Simply fill out this form and return along with full payment by cash, cheque or money order to: King St Community Preschool,
50A King St, East Maitland
NSW, 2323

Company/Contact Name		
<input type="text"/>		
Street		
<input type="text"/>		
City	State	Post Code
<input type="text"/>	<input type="text"/>	<input type="text"/>
Phone	Our Donation	
() <input type="text"/>	<input type="text"/>	

Offer closes on Wednesday 19th July

Please copy and pass on to any friends & family
WE NEED YOUR SUPPORT!

SIGNATURE
ENGRAVING

© 2014 Signature Engraving - www.signature-engraving.com.au +61

August 2017



Thornton Park District Cricket Club Inc.



Thornton Thunder Registration Days For 2017-2018 Season

Saturday 19th August 1pm – 5pm @ Thornton Oval

Saturday 26th August 1pm – 5pm @ Thornton Shopping Centre

Saturday 2nd September 1pm – 5pm @ Thornton Oval

Saturday 9th September 1pm – 5pm @ Thornton Oval

Thornton Oval is located next to the Coles Shopping Centre, Taylor Avenue Thornton

All Age Groups are Welcome from Milo in2cricket, Milo T20 Blast, U10's – U16's

& Senior 1st – 5th Grades

We are also looking for any girls interested in joining a Sixers Girls Cricket League

This is a 9 a side T20 Cricket League designed for Girls

Costs are:-

Senior Rego \$150 & match fess of \$15 per game

Junior Rego \$80 & match fees of \$5 per game

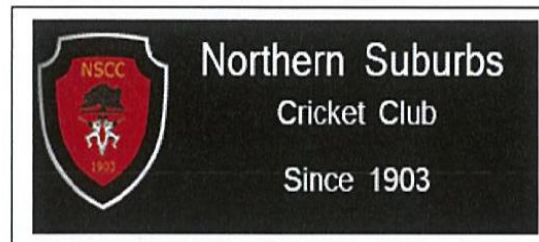
Sixers Girls Cricket League Rego \$50

Milo in2cricket \$75 (includes shirt, hat, bag, bat & ball)

Milo T20 Blast \$99 (includes shirt, cap, bag & promotional items)

All Registration fees must be paid (unless arrangements are made) prior to the commencement of the season which is Saturday 7th October 2017

For further information contact Club Secretary Mark Warland 0488957942
or email: thorntonthunder@hotmail.com



Registrations for 2017/2018 Season (Juniors & Seniors)

Where: Lorn Park Club Rooms

Dates: Friday 11 & 18 August – 4:30 to 6:30pm

Saturday 12 & 19 August – 9:30 to 11:30am

All new players are welcome to attend. New Juniors, Please bring your Birth Certificate for sighting – proof of age.

OnLine Registrations: Existing players will receive email instructions.
(If your email address has changed please contact the committee.)

Any further information please

Visit Website: www.northscc.com.au/registration OR

Email: will.callinan@mn.catholic.edu.au OR

Facebook: www.facebook.com/northernsuburbscricketclub OR

Phone: Will Callinan 0410 487 331

**NOTE: Instead of the NSW Milo In2Cricket
Norths are running clinics for 5 to 9 year olds.
More details will be published once organised.
Phone Will on 4930 1782 for enquiries.**

August 2017

EAST MAITLAND LITTLE ATHLETICS

Registrations are OPEN. Below is the link:

<https://memberdesq.sportstg.com/index.cfm?fuseaction=main&OrgID=914>

If everyone could register online first, it would be much easier. You do not have to pay online but if you pay at a registration night, please bring cash, until eftpos is available.

All registration nights are at East Maitland McDonald's 5:30pm-7:30pm

15th August
22nd August
29th August

Uniforms:

All uniforms have to be purchased from us, CANNOT BE PURCHASED FROM ANY OTHER SHOP. A uniform set is \$55 or you can buy a singlet/crop top and pants separately for \$30 each.

We run on a Tuesday night and events start at 6.00pm

We offer a 2 week trial Period for the athletics, to see if it is liked, before parents register.



**WALLSEND TOUCH
JUNIOR COMP
2017**

HEY KIDS! PLAY TOUCH FOOTY!

TEAMS – INDIVIDUALS – SKILL SESSIONS – CUBS PROGRAM

**Registrations
NOW OPEN**

Easy online process!
Register your team NOW FREE!
Players pay before comp starts!

Teams accepted up to 20 Aug 2017

**Starts 29 Aug**

Cheapest Sport Around
Sibling Discounts
PLUS a **FREE SHIRT &
TEAM BALL**

Same Venue each week
Air Conditioned Canteen
& Club House
All ages NOW Tuesdays

Girls & Boys - 6 to 15 yrs

CUBS Program 4/5/6 Yrs

Touch Footy Skill Program

'Try Touch Footy' School
Carnival - Has your
school registered?

MORE INFO –
wallsendtouch.com.au



admin@wallsendtouch.com.au

PH: 0414 896 573



August 2017

HAVE YOU FORGOTTEN TO NOTIFY THE SCHOOL ABOUT CHANGES TO YOUR INFORMATION?

- New mobile number - New home phone number - New work phone number
- Emergency contact person or number - Your name change - New carer (step-parent)
- Medical updates (Allergies, medications, injury risks)

Is there something we need to remove from our records such as an old home or mobile phone number or contact person? Some changes such as a new surname will require legal documents to be provided to the school before the change can be made.

We need to keep in touch with you for your child's education, comfort and safety.

Please contact the school by phone 49 342 066, fax 49 345 086,
email maitgross-h.school@det.nsw.edu.au, or drop into the front office.

CHANGE OF DETAILS SLIP

STUDENT NAME.....YEAR.....

NEW ADDRESS.....P/C.....

MUM

NEW HOME PHONE.....NEW MOBILE NUMBER.....

NEW WORK NUMBER.....

DAD

NEW HOME PHONE.....NEW MOBILE NUMBER.....

NEW WORK NUMBER.....

NEW CARER INFORMATION

CARERS NAME.....

RELATIONSHIP TO STUDENT.....

HOME PHONE NUMBER.....MOBILE PHONE NUMBER.....

NEW EMERGENCY CONTACTS

NAME.....

RELATIONSHIP TO STUDENT.....

HOME PHONE NUMBER.....MOBILE PHONE NUMBER.....

NEW MEDICAL DETAILS

.....
.....
.....



Tenambit Morpeth Cricket Club Inc



Registration Saturdays 10.30am-1.30pm

Rebel Sport (Green Hills)

(20% Discount on All Full Priced Items with Rego Receipt)

19th, 26th Aug & 2nd, 9th, 16th, 23rd Sept

Seniors (\$150) – Full Clothing Outfit

Juniors (\$100) - U/14's to U/16's

Juniors (\$75) - U/10's to U/12's

Milo Cricket (\$75) - Ages 5-8 years

Enquires Contact – Damien (041) 2681192

www.TenambitMorpethCricket.com



East's
East's Leisure & Golf

August 2017

ANNUAL REUNION LUNCHEON

INCLUDING 50 YEAR REUNION FOR CLASS OF 1962-67

SATURDAY 9 SEPTEMBER 2017

Stardust Room, Telarah Bowling Club
Bligh Street, Telarah

11.30 am - 4.00 pm
(lunch served at 12 noon)

\$40
(includes annual subscription)

Bring some extra cash for drinks, raffles and badges
A formal invitation is not required to attend: all ex-students are very welcome!

RSVP by 31 August 2017 by detaching and returning the reply slip (below) to:
Mrs K Hamilton PO Box 22 MAITLAND NSW 2320 ☎ 02 49301431

Looking forward to seeing you
Wendy Allomes, President



2017 REPLY

Name: _____ née _____

Address: _____

_____ At MGHS: _____ to _____

Special dietary requirements _____

☐ ACCEPTANCE ☐ \$40 cheque/money order enclosed payable to MGHSOGU; or
☐ \$40 EFT to MAITLAND HIGH SCHOOL OLD GIRLS UNION
BSB 062813 Acc No 00800354
Reference: Current surname and first initial

☐ APOLOGY ☐ I **enclose** 4 x \$1 postage stamps annual subscription fee; or
☐ \$4.00 EFT to MAITLAND HIGH SCHOOL OLD GIRLS UNION
BSB 062813 Acc No 00800354
Reference: Current surname and first initial.

Please send to Mrs K Hamilton PO Box 22 MAITLAND NSW 2320 by 31/8/17
Please return this slip even if you pay by EFT.
Failure to reply will remove your name from the mailing list.

August 2017



City United DCC

Registration information 2017/18

Registrations will be taken for **Milo Cricket, U10s to U16s** as well as **senior players**.

We welcome new and existing players to come along on to

Maitland Park Bowling and Sporting Club

on the following dates:

Tuesday 15th August 4.30pm-5.30pm

Tuesday 22nd August 4.30pm-5.30pm

Saturday 2nd September 11am -12noon

City United DCC is based in scenic Maitland Park and has three grounds which cater to all playing abilities. We have been successful in both junior and senior cricket in the district competition for over 100 seasons!

Contacts for further information:

Michael – 0417498370 vikkijordan@bigpond.com

Paul – 0419294033 pbrownle@ausgrid.com.au or kritopaul@bigpond.net.au

Season fees:

Juniors - \$150 for full season

Seniors - \$150 registration fee to be paid before Round 1

www.facebook.com/cityunitedcc



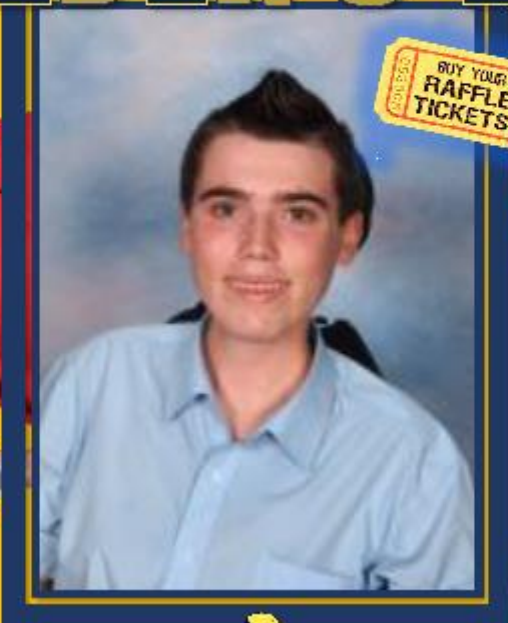
<http://cucc.nsw.cricket.com.au>

Poster by, Jack Carlson

KAEDEN'S DAY



It's me, Adam
MacDougall.
I'll be there.



BUY YOUR
RAFFLE
TICKETS!



WIN NRL PRIZES!



Sausage Sizzle &

Cans of Soft Drink

Lollies 

*Ribbons will be handed out at the
front gates at the school.*

ULTIMATE WHEELCHAIR BASKETBALL TOURNAMENT



All money raised goes to the
Save Our Sons charity.

The 1st of September, 2017

TRANSITION

Maitland Grossmann High School's Term 3 Transition Program aims to build student wellbeing and connections with MGHS. An important aspect of our program is to help the students adjust to their new 2017 school, develop a sense of belonging and of being socially connected. This is achieved through the following transition events:

Term 3

T-STEM ROBOGALS

Introducing Young Women to Engineering

Robogals is a student-run organisation that aims to increase female participation in engineering and technology through fun and educational initiatives. Robogals arranges for Newcastle University student volunteers to visit MGHS to run LEGO robotics workshops. Our Year 6 Robogals Workshops will be:

Monday 28/8/17 Ashtonfield Public 9.30 – 11.30 at MGHS in the Hall

Tuesday 29/8/17 East Maitland Public 9.30 -11.30 at MGHS in the Hall

Wednesday 30/8/17 Maitland and non-Partner Primary school 9.30 -11.30 in the Hall

This transition program also relies on the support of Year 9 & 10 STEM students who act as mentors to our primary students. A huge thank you goes to: Mark Bayada and the MGHS STEM teachers for being such team players, helping train the Stage 5 STEM girls for this event and for giving up their time to help deliver the RoboGals sessions, to Dr Scott Sleaf for initiating this program and for being such a great support to our school. As well as, a big thank you to Newcastle University RoboGALS Unit for assisting with the delivery and equipment for all the workshops.

Individual School Short Transition Visits:

Each partner primary school will visit MGHS. The visit will last approximately 1 hour. During this outing, students will visit important student spaces when not in class. They will start to learn the layout of the school, learn how to order their recess/lunch, how to purchase food/drinks from the canteen, learn where they sit for Morning Assemblies, where to go at recess and lunch, see where the Junior Toilets are, visit their Year Advisers and see where their staff rooms are located. They will be introduced to before and after school bus procedures. Students will have the opportunity to make a small purchase from the School Canteen, as well as to have any transition queries addressed.

- Ashtonfield Visit: 28/8/17 – boys will come over at 11.30 and meet the girls
- East Maitland Visit: 29/8/17 – boys will come to MGHS at 11.30 and meet the girls
- Maitland Visit: 30/8/17 boys will come to MGHS at 11.30am and meet the girls
- Non-Partner Schools: 5/9/17 (9.30 – 10.30am) or you can choose to visit Maitland Public on the 30/8/17 (girls will already be here for Robogals) boys can also come in at 11.30

Extra Transition is available for students and their parents/carers. Partner Primary Schools will organise the extra visits with MGHS and communicate dates and times with families.

Non-partner Primary School parents who believe their child would benefit from extra visits to MGHS can arrange this by calling Lyne Matthews (49342066) or via email Lynette.Matthews2@det.nsw.edu.au.

During these visits students will learn how to read a sample MGHS student timetable, learn where to find MGHS staff who can support them while they are attending school, play Treasure Hunt games around finding different locations within the school boundaries, as well as have their concerns about attending high school addressed. Parents and carers are also encouraged to attend these visits.

TRANSITION SPORT DAY

Date for our Transition Sport Day is Thursday the 21/9/17. It is a transition event for all Year 7 2018. Students are to meet at Maitland Park at 9.30 near the rotunda next to the netball courts. Students will participate in a variety of sports and games. Students will be led by Year 9 Peer Support Leaders and PASS students. They will need to bring food and drinks for the day, as well as, sun protection and something to sit on. All students are to wear their school sport uniform. The day will finish at 2.15pm.

There will be more Transition Events in Term 4.

MENTAL HEALTH

R U OK? Day will be the 14th September. This is an important day to foster and support the relationships students develop with each other, with the staff and for staff wellbeing. The Welfare Team's reminder to all the school community is to encourage all to check in with friends, work colleagues and students to ensure they are OK.



Interesting statistics about mental health

<https://www.sane.org/mental-health-and-illness/facts-and-guides/facts-figures>

- Nearly half the population will experience a mental disorder at some stage in their lives
- Almost one in five Australians will experience a mental illness in a 12-month period
- Depression is one of the most common conditions in young people and increases during adolescence.
- At least one third of young people have had an episode of mental illness by the time they are 25 years of age.

- ONLY one in four young people presenting with symptoms of mental illness will seek help.

RU OK?
A conversation could change a life.

1. Ask R U OK?



Start a conversation using these 4 steps

4. Check in



2. Listen without judgement



3. Encourage action



RU OK? Is an easy and effective conversation starter when concerned about the mood of another person. We encourage all to have that conversation and support that person to seek help.

Some helpful websites for families supporting people with mental illness

www.sane.org
<http://au.reachout.com/>
<https://www.headspace.org.au/>
<https://www.beyondblue.org.au/>

Some helpful apps

- ReachOut Worrytime – helps you to deal with worries once a day, rather than have them with you all day/night
- ReachOut Breathe – helps to reduce the physical symptoms of stress and anxiety by lowering down heart rate with mobile phone (iOS) or Apple Watch
- Smiling Minds – meditation app for a range of ages

TAS

Students in **Year 12 CAFS** classes worked alongside students from Hunter River High in preparation for the Trial and HSC Examinations. This marks the fifth year of cross-school collaboration between MGHS and HRHS. Once again, all students worked cooperatively in teams to enhance their knowledge and understanding of course concepts. Comments from students included “it was interesting to work with students from another school as it helped to consolidate my learning” and, “having course work presented by teachers from another school reinforced our learning”.



Year 11 Hospitality have recently catered for two school functions, The Broadway Musical and the Education Week Awards, where they continued to put their developing skills to practice by serving a variety of dishes.



August 2017



Year 10 Food Technology have commenced a new unit of work this term called *Food Equity*. In this unit of work students had to make a packet cake without instructions or knowing any quantities of ingredients to add to the cake mix. This reinforced the need for people to be able to read and be educated in food and nutrition around the world. We are pleased to say that all our students produced excellent cakes.



Year 12 Exploring Early Childhood students have been working on a unit “Aboriginal and Torres Strait Islander Children”. As an activity to enhance this unit, students created Aboriginal hand paintings in class.



Careers and Transition News August 2017

Term 3 has been a very busy time at MGHS. With Yr10 having their “Subject Selection’ looming to Yr12 preparing for their trial examinations not to mention the opening of the application process for admissions to university (UAC).

Year 10 has been well prepared for their subject Selection in week 5. I have gone around to every Yr 10 classroom and presented to students talking to them at length about what will be happening and what Yrs 11 and 12 are all about. Student should have a strong understanding of ATAR and non ATAR pathways. I have also had interviews with numerous student who needed further support in the big decision.

Year 12 are not only preparing for their Trial Examinations those with uni in their sights are also thinking about their preferences and different schemes that can support the with the entry process. To address this I have gone to all the Yr12 English lessons and presented a UAC information session to address all they need to know and for those that are non ATAR I have presented information about post school option from studying at TAFE or a private provider. These students also had the opportunity to hear from Workskil Australia with reference to a program called ‘Get Moving’ which is a youth relocatable employment program available for 18-24 year olds living in selected areas, for more information about this program can be found at <http://www.workskil.com.au/youth/get-moving/>

Youth Frontiers Term 2, 3 and 4

Youth Frontiers is aimed at student in years 8 or 9, who have the capacity to benefit from youth mentoring that focuses on leadership and civic engagement. This entrepreneurial program designed to extend students and promote innovative concepts. The presentation of developed concepts will be presented Wednesday 23rd of August.

Adopt a Resident

The month of August will see the commencement of the Adopt A Resident Program. This will involve 33 Year 10 students, and will consist of 4 visits to Benhome and Largs Lodge with the last visit being a morning tea and concert for residents and students. The purpose of this program is to develop communication and caring skills in the community sector and for students to investigate career compatibility and opportunities within age care/nursing.

Excursions are as follows:

Visit 1- Tuesday 15th August (Pds1-3)

Visit 2- Tuesday 19th September 19th (Pds1-3)

Visit 3- Tuesday 31st October (Pds1-3)

Visit 4- Concert/Morning Tea- Thursday 30th November- Largs Lodge (Pds 1-4)

-Thursday 14th December- Ben Homes (Pds 6, lunch, 7)

Multi -disciplinary Showcase- John Hunter Hospital

On the 24th of July, the John Hunter Hospital hosted a showcase that displayed a vast insight into the hospital's medical disciplines. A total of 6 year 10 students were selected to attend this event, in which they gained extensive knowledge from experienced medical professionals. This showcase was specifically focused on students that have a vocational interest in nursing and medical disciplines.

Plan-it Youth Term 2 and 3

Plan-it Youth has again been a positive program on the MGHS calendar with 9 participating students and mentors. This program has a wonderful way of quietly instilling confidence into students to make them believe they are capable of achieving their goals. This program concludes week 6 with a celebration where the students, their mentors together with loved ones and selected staff celebrate the positive outcome of this program.

RFS Cadetship Term 3

The RFS cadetship has given student the opportunity to gain skills and knowledge in the Rural Fire Service and all it entails. Falling short of putting out fires student experience first-hand the fire truck and how to man it. Teamwork has a strong focus in this program and students have the opportunity to participate in numerous scenarios to give them an understanding of what the RFS is all about. This is another program that will bring numerous benefits to students, not to mention the positive effect it will have on any resume.

Recommended Reading: This article is very informative referencing the future of work for young Australians. It's going to be a different world and we need to prepare our children for it!

The Foundation of Young Australians

,

The New Work Order'

https://www.fya.org.au/wp-content/uploads/2017/07/FYA_TheNewWorkSmarts_July2017.pdf